

NOTES

FULL FRONT = 12"W X 9"H
RIGHT CHEST = 3.5"W X 3.5"H
LEFT CHEST = 3.5"W X 3.5"H

RIGHT SLEEVE = 3"W X 14"H
LEFT SLEEVE = 3"W X 14"H

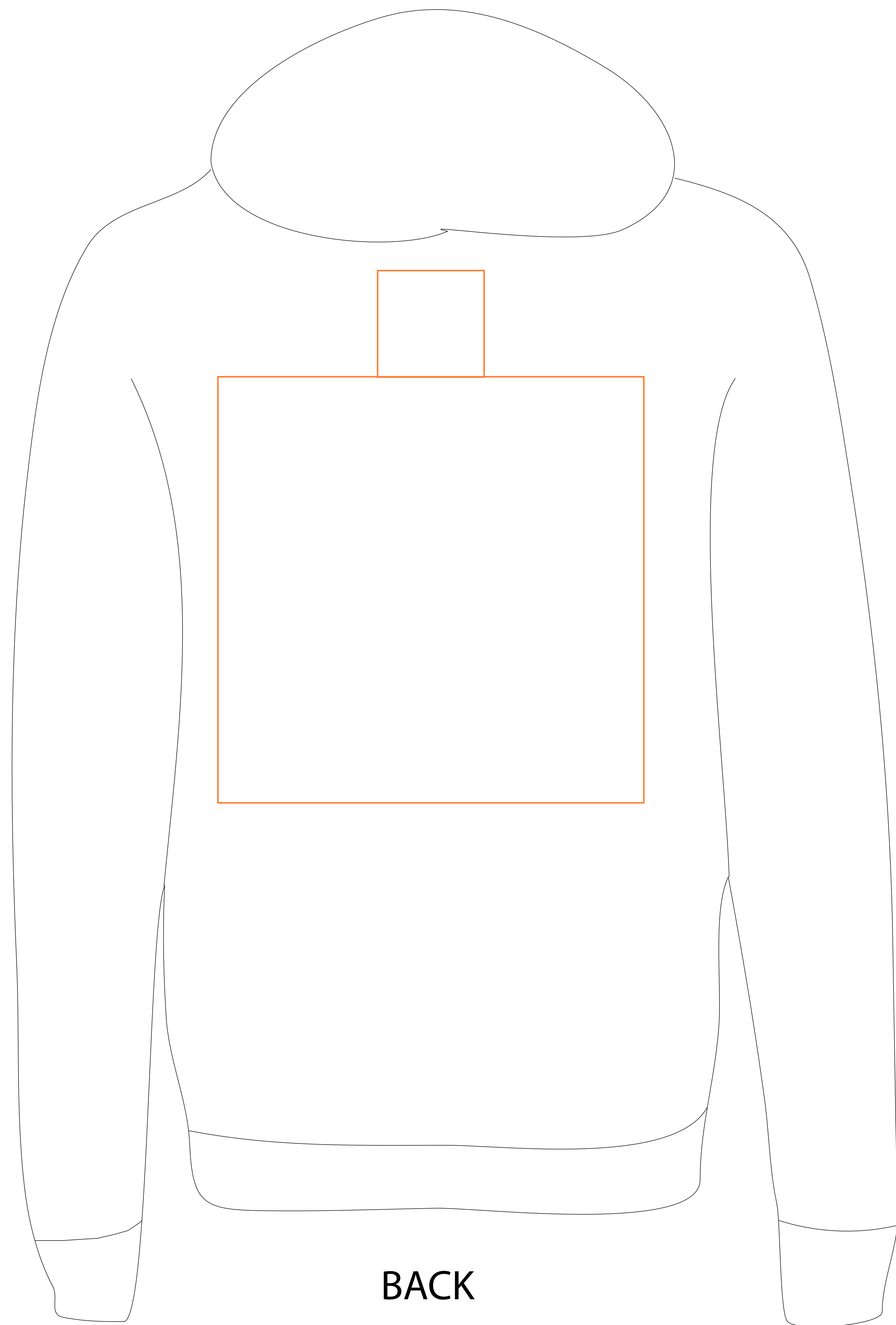
FULL BACK = 12"W X 12"H
NAPE = 3"W X 3"H

CLIENT NAME

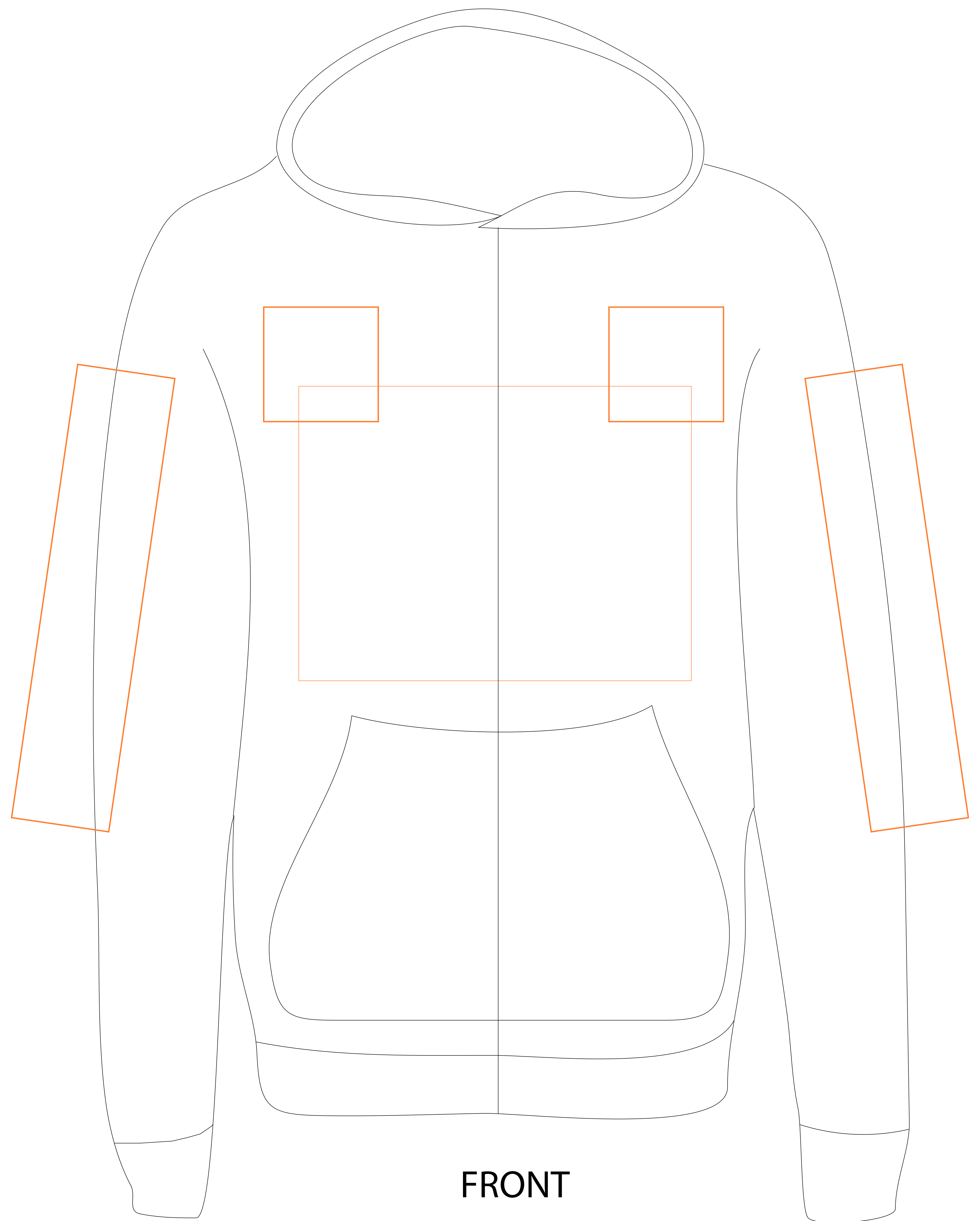
ITEM#: **ALTERNATIVE APPAREL 9590 (COLOR?)** PO: **TBD** DATE: **00-00-20**

IMPRINT LOCATION: **0 SIDE** IMPRINT COLOR: **0 COLOR**

- 1ST: PMS
- 2ND: PMS
- 3RD: PMS



BACK

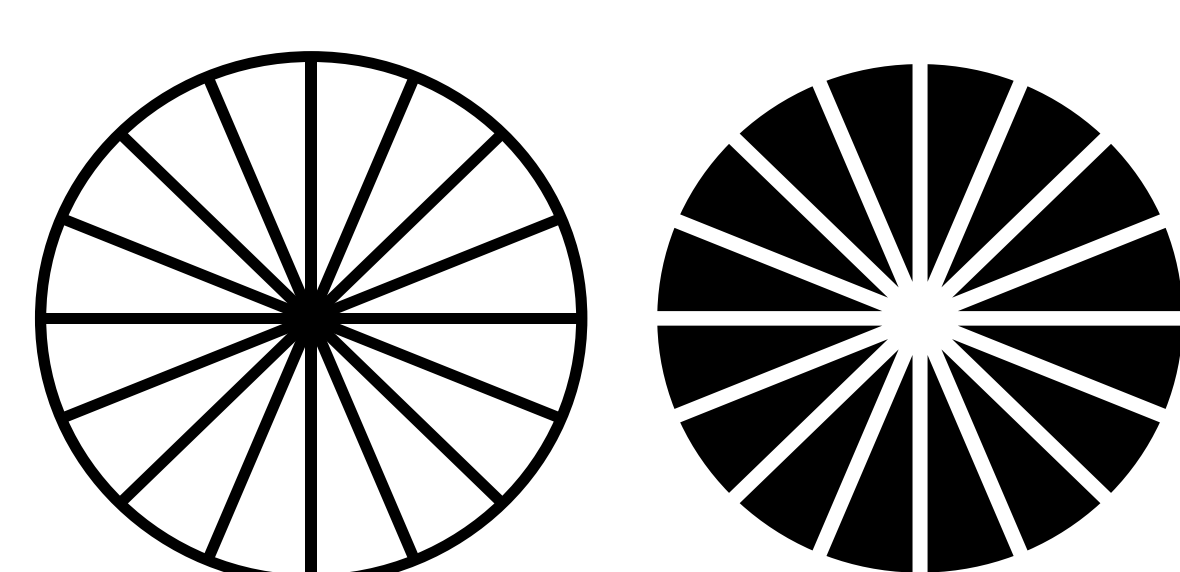


FRONT

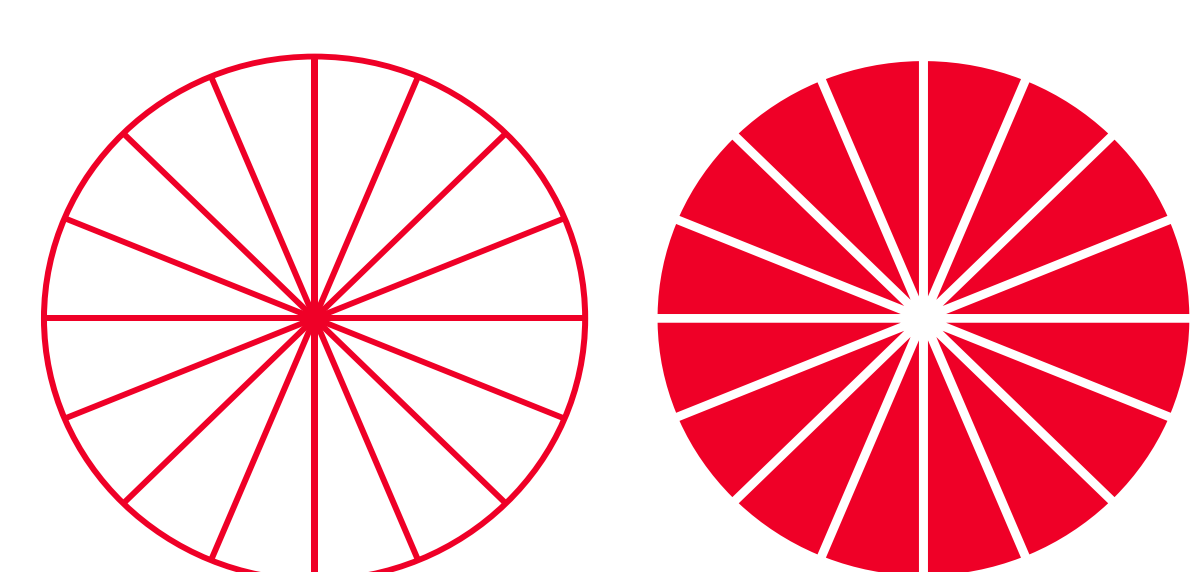
***NOTE:** Color may appear different on different monitors. Computer monitors are not all calibrated equally, because of this it is not possible to guarantee that the colors you see on you monitor accurately portray the colors noted above. Please also note that we costume mix all colors because of this we are UNABLE TO GUARANTEE 100% COLOR MATCH.

USE THESE LINE WEIGHT WHEELS TO HELP DETERMINE IF YOUR ART IS SCREEN PRINTABLE

BEST PRINT RESULT (RECOMMENDED)



ABSOLUTE MINIMUM (NOT RECOMMENDED) DETAILS MAY BE LOST



DO NOT RESIZE THE WHEELS

DISCLAIMER: We take great pride in the quality of our production. However, due to the shape of glass and ceramic vessels and the inherent nature of production, artwork is subject to fill in and registration is subject to move up to 1/4", which is within industry standard.

- Please read this proof for errors carefully. ALL ART WILL BE PRINTED DIRECTLY FROM THIS LAYOUT
- CHECK SPELLING, ART PLACEMENT AND COLOR ASSIGNMENTS before approving.
- Errors found after your approval are most likely unable to be corrected, PLEASE INSPECT CAREFULLY